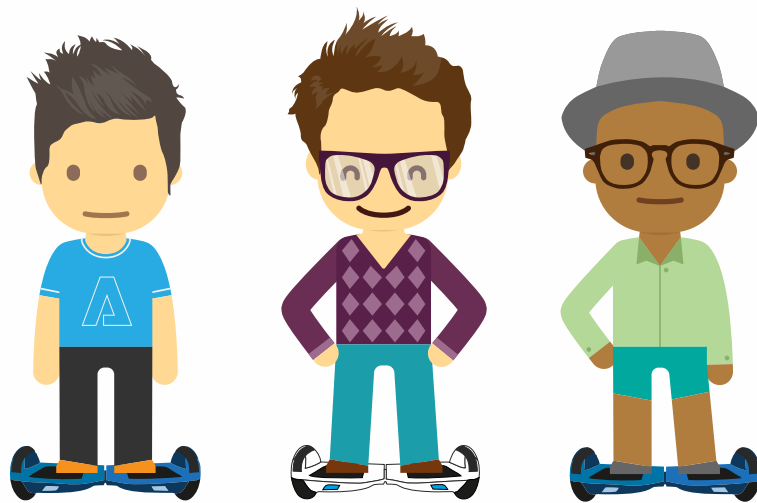


# ZIMX

HOVERBOARDS  
WITH ATTITUDE



**Model : HB4**

**Smart Balance Board / Hoverboard  
User Manual**

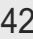
[www.ukbigbuy.com](http://www.ukbigbuy.com)

# SMART BALANCE BOARD / HOVERBOARD MODEL : HB4

YOUR SAFETY &  
INSTRUCTION MANUAL  
**PLEASE READ CAREFULLY**



## Technical Data

Product Description	Smart Balance Board / Hoverboard / Swegway
Model	HB4
Lithium-ion Battery	36V, 2.0Ah, 72Wh, Lithium-ion Battery Pack
Motor	Dual 200W (x2) Motors with Dual Independent Gyros
Distance on full charge	Between 6 - 7.5miles / 10 - 12km
Charging Temperature	0°C to 40°C / 32 °F to 104 °F
Charging time	2 to 3 hours
Charger Input	100-240V ~ 50/60Hz, 1.5A Max
Charger Output	DC 42V  0.85A
Max Speed	6mph / 10km/h
Max Loading	100kgs
Max Climbing Limit	15 degree
Temperature	-10°C to 45°C /14°F to 113°F
Wheel size	165mm / 6.5 inch
Product Dimensions	590*180*190mm
Net Weight	10kgs

# HELMETS SAVE LIVES!

Always wear a properly fitted helmet that complies with CPSC or CE safety standards when you ride your scooter.



**Correct Fitting:**

Make sure your helmet covers your forehead.



**Incorrect Fitting:**

Forehead is exposed and vulnerable to serious injury.

## IMPORTANT! Read Carefully and keep for future reference

### PRODUCT SAFETY

When using **any** electrical appliance, basic safety precautions should always be followed including the following:



ROTATING PARTS



WARNING

- WARNING: NOT SUITABLE FOR CHILDREN UNDER 14 YEARS.
- IMPORTANT: THE BOARD IS NOT A TOY
- WARNING: Whenever you ride the board you risk injury from collisions, loss of control and falls. It is the user's responsibility to learn how to safely ride and control the board in order to reduce the risk. It is essential for the safety of the user that all instructions and safety information are read and understood before first use.
- WARNING: Wear protective personal equipment at all times when using the board. This includes an approved bicycle or skateboard helmet, knee pads, elbow pads and any other protective gear.
- WARNING: Do not wear heeled shoes, open toed shoes or sandals whilst using the board.
- WARNING: Not for use by children, pregnant women or elderly people.
- Not suitable for individuals with lack of balance.
- DO NOT operate whilst under the influence of drugs and/or alcohol.
- DO NOT operate whilst restless or sleepy.
- The Smart Balance Board is only to be used for personal entertainment use.
- DO NOT use as a skateboard. Do not ride the board off of ramps, pavements, or attempt to operate in a skate park, or use in any other way similar to a skateboard or scooter.
- DO NOT use as a racing instrument.
- CAUTION: Do not ride on motorways, roads or other environments stipulated by any local laws and regulations. Adhere to area by-laws for use on public highways.
- Abide by all local traffic laws.
- The board must be used on private property with owner's consent.
- Do not operate in crowded areas.
- Please use on flat, dry, hard surfaces
- WARNING: Surfaces such as rough or rugged terrain, snow, ice, wet and/ or slippery floors and any surfaces with obstacles such as twigs, gravel, stones or debris are NOT suitable for use.
- WARNING: Do not drive in or near puddles of water, pools or other bodies of water.
- WARNING: Do not drive in any extreme weather – snow, sleet, rain, hail, mist or extreme heat.
- WARNING: Do not ride your board over or near cracks, potholes or uneven pavement.
- Avoid driving in narrow spaces.
- Avoid driving on steep slopes.
- Avoid driving in unsafe places, including near to or around flammable gas, steam, liquid, dust, or fibre, which could cause fire and explosion accidents.
- Do not drive at night, in the dark or in badly lit areas.
- Do attempt to drive over bumps or objects greater than ½ an inch.
- If you do encounter any objects or debris blocking your path, safely step off the board and carry it over the obstacle.

**Only use the product in accordance with local regulations**

- Do not carry anything whilst riding the board.
  - Do not allow distractions when driving, such as answering the phone, listening to music, or engaging in any other activities.
  - **WARNING: DO NOT** attempt to operate the board with two or more people at once. The board is intended for use by a single individual.
  - Do not exceed the minimum or maximum weight limits.
  - **CAUTION:** The maximum weight limit is 100kg, including the user and any belongings (i.e. backpacks). Do not surpass the maximum weight limit. Exceeding the maximum weight limit may result in functional damage, or a failure to the device which can result in injury or serious bodily harm.
  - **CAUTION:** The minimum weight limit is 20kg. The board will not be able to operate correctly when user is below the 20kg limit. This may result in functional damage, or a failure to the device which can result in injury or serious bodily harm.
  - Please note that when using the board, your height has increased by 10 centimetres.
  - Ensure you drive within the safety speed range.
  - Take caution when passing through doors or similar.
  - If riding with other users on boards, please keep a certain distance between each other to avoid a collision.
  - Do not turn sharply, especially at high speeds. Ensure you are well balanced before executing any turns.
  - **DO NOT** step forward off of your board.
  - **DO NOT** jump on or off of your board.
  - **ALWAYS** step backwards off of your board.
- Step one foot down behind the board and then step off completely.
- Ensure your feet are securely placed on the on the pads at all time. Do not stand on any other parts of the board.
  - Do not stand on the fenders.
  - **CAUTION:** Do not place any objects on the pads. This will trigger the pedal switch and the board will not be able to switch off. This increases the probability of collision, injury, or damage to the board.
  - **CAUTION:** Do not attempt to modify your board. Doing so will void your manufacture warranty and may cause a failure to your device which could lead to injury, serious bodily harm or death.
  - **CAUTION:** Do not immerse any part of the board in water or any other liquid.
  - **WARNING:** Do not insert the plug if the Charge Port is wet.
  - It is essential for your safety and for optimum performance of the product that you fully read and follow all instructions before use.
  - In the interests of the user's safety, by purchasing this product you confirm that you have read and understood this advice.
  - In the unlikely event the appliance develops a fault, stop using it immediately and seek advice from the service department.

**+44 121 454 7589**  
**info@ukbigbuy.com**

- This product is to be used a recreational product, it is not intended to be used as means of transport.
- Do no use on roads and pavements or in public places.
- Only use on private land with permission of the land owner.
- This product can only be used by one person at a time. DO NOT carry another passenger at any time.
- Do not attach or use any additional items or accessories not approved for use by ZIMX / ukbigbuy.com
- Maximum weight supported by the product is 100kg
- Minimum height for the rider should be 4ft (121cm) and with a minimum weight of 20kg
- Minimum age of user for this product is 14 years
- This product has a self balancing system designed to keep you balance when using it
- Each of the both motors / wheels that are fitted to this product have a Max Power output of 200W. Total 400W of power is used in this product.
- Please use this product on a dry, clean and level surface. Please keep at least 6ft distance of similar product users when being used at the same time.
- Please use protective equipment such as helmet, hand/knee and elbow to prevent any serious injuries during use.
- You must wear appropriate footwear to use this product, such as trainers or shoes with rubber soles. DO NOT use without footwear being worn.
- We recommend to use the product in well lit areas and not in dark places.
- This clean the product only with damp cloth if it gets dirty after use outside.
- Do not touch any of the wheels during use and while in motion, keep fingers away from wheel arches also.
- WARNING! As with any mechanical component, this product is subject to high stresses and wear. The various materials and components may react differently to wear and fatigue. If the expected service life for a component has been exceeded, it may break suddenly, therefore risking causing injuries to the user. Cracks, scratches and discolouration in the area subject to high stress indicate that the component has exceeded its service life and should be replaced
- Traffic in the city has many obstacles to cross such as curbs or steps. It is recommended to avoid obstacle jumps. It is important to anticipate and adapt your trajectory and speed to those of a pedestrian before crossing these obstacles. It is also recommended to get out of the product when these obstacles become dangerous du to the shape, height or slippage.
- Take the time to learn the basics of the product to avoid any serious accident that can take place in the first few months.
- Get closer to your seller so he can refer you to an appropriate training organisation.
- Avoid high traffic areas or overcrowded areas.
- In any case, anticipate your trajectory and your speed while respecting the code of the road, the code of the sidewalk and the most vulnerable.
- Notify your presence when approaching a pedestrian or cyclist when you are not seen or heard.
- Cross the protected passages while walking.
- In all cases, take care of yourself and others.
- Do not use this product other than its intended use.
- This product is not intended for acrobatic use.
- Caution, the wheels of the product may become hot in use, Do not touch after use.

- Eliminate and sharp edges cause by use.
- Do not modify or transform this product in any way.
- Do not attempt to modify or service this product in any way. Please contact our customer service team to explain your issue, so that we may assist you in keeping the product fully operational as its intended use. As we keep stock of all parts and components to fix any issue that may be required.

#### NOISE EMISSION

- The A-weighted sound pressure levels of the product when turning it on, to activate the Bluetooth speaker availability mode is 78 dB. This A-weighted sound pressure levels are according to EN ISO 3744 : 2010 standard.
- The A-weighted sound power level emitted by the product when being used is 63 dB.

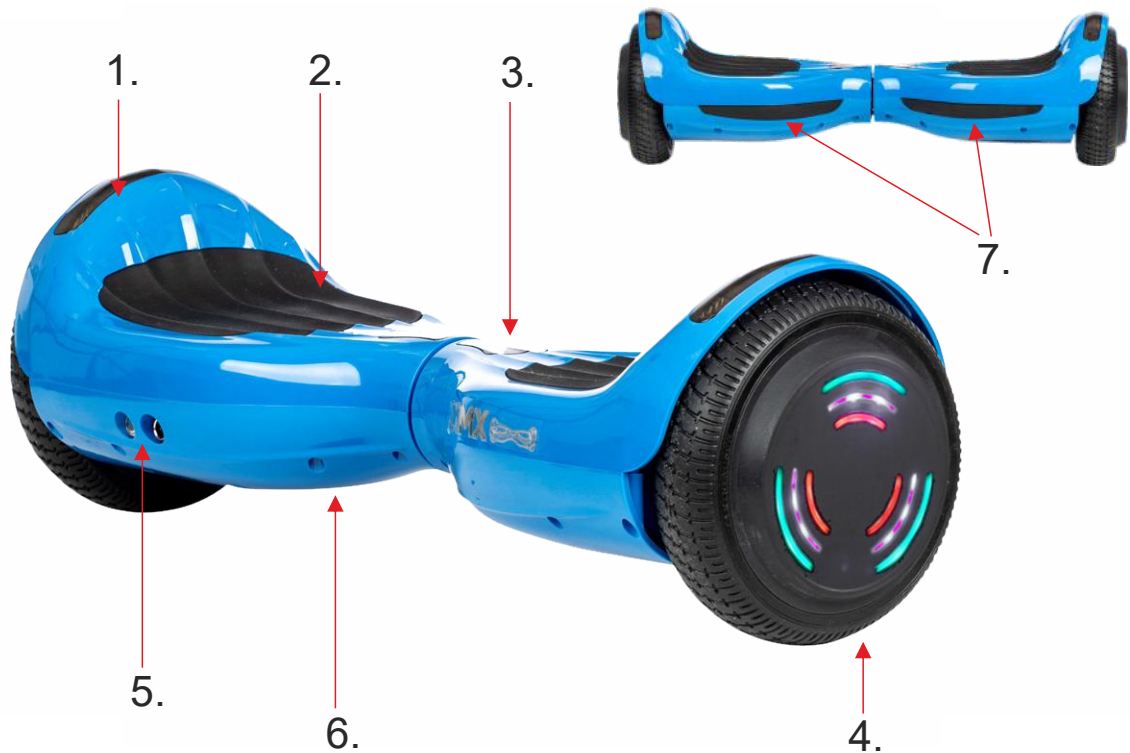


## WHAT'S IN THE BOX

Instruction Manual

Charging Adaptor

1. Fender with LED Lights
2. Rubber Foot Pads
3. Display Board
4. Tyre & Motor (LED Wheels)
5. On/Off Button / Charging Port
6. Underbody Protection
7. LED Path Finder Lights



---

## BEFORE YOUR FIRST USE:

**All assembly must be conducted by an adult.**

1. Remove your Smart Balance Board from the packaging.
2. Charge as per the charging instructions.
3. Read all the safety and user instructions.
4. Your Smart Balance Board is now ready for normal use.

**Dispose of the packaging in a responsible manner.**

## Using your Smart Balance Board

The HB4 Smart Balance Board is a self-balancing electric vehicle with two wheels.

The HB4 Smart Balance Board uses gyroscope and acceleration sensors to control balance intelligently depending on a centre of gravity and servo-control systems to drive the motor accurately. Simple movements of your body direct and control the movement of the Smart Balance Board. Built-in inertia dynamic stabilisation systems maintain forward and backward direction. When driving your Smart Balance Board, shift your weight in order to overcome the centrifugal force and improve the safety of your turns.

### Display Board:

The display board is located in the middle of the Smart Balance Board. It displays the running and charging information.

### Running Light:

When the user triggers the foot switches, the running light will come on, indicating that the Smart Balance Board is ready for use.

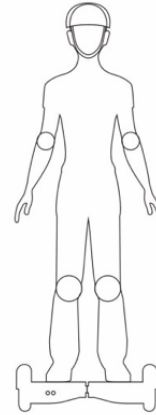
The indicator light will turn red when an error occurs.

### Battery display:

The battery symbol will be lit green when the Smart Balance Board is fully charged. When the yellow LED lights up, the battery is on 50% and red indicates that the battery power is down to 20% and will need recharging

### Driving Safety:

Before using the Smart Balance Board make sure you are wearing appropriate safety gear i.e. helmet, knee pads, elbow pads and suitable footwear.



### Speed limit:

The maximum speed the Smart Balance Board can reach is 10km/h. This enables the Smart Balance Board to maintain the balance of the user safely.

### Weight limit:

The minimum and maximum weights able to safely use the Smart Balance Board are as follows: minimum 20kg, maximum 100kg.

### Maximum driving range:

A multitude of factors affect the driving distance possible per charge, such as:

#### Weight:

The amount of pressure placed on the Smart Balance Board by the user can affect driving distance.

#### Landform:

A smooth, flat surface will increase the driving distance.

#### Maintenance:

Reasonable battery charging, upkeep and maintenance will all increase the driving distance.

#### Speed:

Maintaining a moderate speed will enable you to drive further distances.

#### Driving style:

Frequent stopping and starting, acceleration and deceleration will all reduce the possible driving distance.

### Ambient temperature:

Driving the Smart Balance Board within the recommend temperature range will help increase possible driving distance. It is recommended to use the Smart Balance Board in temperatures ranging from 5°C to 50°C.

### Protection Functions:

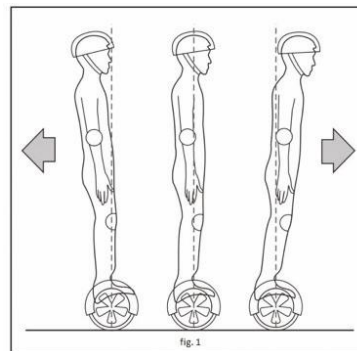
Problem	Response
Battery Shortage	If the battery is too low to function the Smart Balance Board will automatically switch off after 15 seconds.
Tilting forward or backwards too much	If the Smart Balance Board is tilted at more than a 35 degree angle the engine will automatically turn off.
Wheel Blocked	In the case of a wheel blockage the Smart Balance Board will stop after 2 seconds.
Driving uphill whilst speeding, rocking or with battery shortage.	The Smart Balance Board will enter protection mode. The red alarm indicator will light up and the buzzer will alarm to alert the user.

### Learning to drive your Smart Balance Board:

1. Press the power button located next to the charging port on the Smart Balance Board. The display lights will come on.
2. Place the Smart Balance Board on flat ground.
3. Stand with the Smart Balance Board directly in front of you, so that the large turning lights are facing away from you.
4. Place on foot on the pad. This triggers the pedal switch. When the Smart Balance

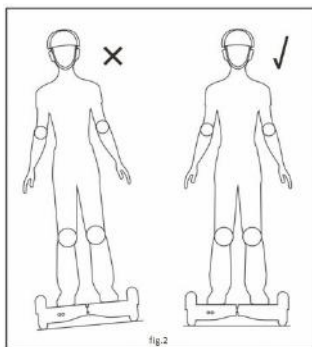
Board has entered self-balancing mode the indicator light will shine green. Place your other foot on the second pad.

5. Before driving the Smart Balance Board, you must find your centre of gravity and maintain your balance. This maintains the Smart Balance Boards stationary state.
6. To get off of the Smart Balance Board, ensure it is balanced and still, and step one foot down behind the board, and then the other.
7. It is recommended to practise stepping on and off the Smart Balance Board before driving for the first time. Repeat steps 5 and 6 until you are comfortable with stepping on and off the Smart Balance Board.
8. When you are ready to drive the Smart Balance Board, you can control it using small movements of your body. Gentle forward movements will drive the Smart Balance Board forward, whilst a backward movement will pull it to a stop. (See fig.1)



9. To turn, lean your body in the chosen direction. It is important to use small movements in order to control the Rider. Move your right foot slightly forward to turn left and your left foot forward to turn right.

Note: If you stand on the Smart Balance Board when it is not on a level surface a buzzer will sound and the red warning indicator will light up. The Smart Balance Board will not enter self-balancing mode and it will not be operational. Move to a level surface and try again. (See fig.2)



### Practising and Tips:

It's important to practise using your Smart Balance Board so that you can drive safely and with confidence. We recommend adhering to the following tips:

- Dress in casual, comfortable clothes and flat shoes.
- Drive your Smart Balance Board in large open spaces until you have mastered the following points: getting on and off the board, moving forwards and backwards, turning and stopping easily.
- Drive on flat ground.
- When driving the Smart Balance Board on unfamiliar terrain, slow down and exercise caution
- Do not drive your Smart Balance Board on the motorway or public highways.
- Do not drive your Smart Balance Board in crowded places. Always exercise respectful use.

### Charging:

Plug the charging cable into the charging port on the back of the Smart Balance Board and connect to the power supply.

When the red battery lights up on the display the Smart Balance Board is charging.

When the indicator light changes from red to green, the unit is fully charged. Do not leave the Smart Balance Board charging for longer, as overcharging can affect battery life.

It will take 2-3 hours for a full charge.

### Cleaning and care:

- Ensure the Smart Balance Board is unplugged and switched off.
- Wipe the cover down with a clean, damp cloth.

Warning: Do not wash the Smart Balance Board or clean with excessive liquid. If liquid seeps into the unit it will cause permanent damage to the internal electronics.

### Storage:

- Fully charge the battery before storing.
- Store your Smart Balance Board indoors, in a clean, dry place.

**WARNING:  
DO NOT IMMERSE THE UNIT IN WATER**

## MASTER RESET / CALIBRATION

### Calibrating the Smart Balance Board

If the smart balance board is making or is sounding a continuous alarm or red error light is showing, then it's sensors may need to be reset. You need to calibrate the device, which only takes about 60 seconds in total (and can take up to 2 or 3 attempts before the device is running as new). Please follow the below steps to resolve the problem;

1. Make sure you do not press on the foot pads during calibration, as this will cause permanent damage to the sensors associated with the foot pad, and the part will need to be replaced. Before calibration press up and down the foot pads to make sure they are in the fully off position, which is fully horizontal and parallel to the ground/floor.
2. Perform the calibration on ground that is flat as possible. No hills, no sloping driveways, no inclines. The best place to calibrate the smart balance board is indoors on a completely flat surface/floor.
3. Align the two halves of the smart balance board with each other. They should be perfect and not twisted away from each other in any way.
4. Keeping the halves aligned, make sure the smart balance board is parallel with the ground surface and making sure that the footpads are also flat and parallel with the ground.
5. Power off/down the smart balance board if not already done so.
6. Now press and hold the power on/off button for 30 seconds, so the smart balance board comes on and keep the button pressed, and the smart balance board in a steady and level position.
7. You will see the lights come on and flash on and off continuously, this means the smart balance board has started to calibrate itself.
8. After about 30 seconds of keeping the on/off button pressed, please release the button and then switch the smart balance board off after about 10 seconds.
9. Turn on the smart balance board as per normal and the smart balance board can now be used as normal.

You may need to calibrate the smart balance board every so often if you notice a misalignment. You may also need to calibrate after it crashes it into something as the sensors get knocked and misaligned. We advise to calibrate the smart balance board before they are used, as sometimes during transport / shipping the sensors may get knocked about and this may cause misalignment.



- Do not use a Battery if the battery pack casing is broken or if the battery emits an unusual odor, smoke, excessive heat or leaks any substance. Avoid contact with any substance seeping from the Batteries.
- Keep out of reach of children and pets. Exposure to battery voltage could result in death or serious injury.
- Unplug or disconnect the scooter from AC power before removing or attaching Batteries or performing any service. Never work on any part of the Scooter when it is plugged into AC power source. You risk serious bodily injury from electric shock as well as damage to the scooter.
- The cells within the batteries contain toxic substances, Do not attempt to open the batteries. Do not insert any object into the batteries or use any device to pry at the battery casing. If you insert an object into any of the battery ports or openings you could suffer electric shock, injury, burns, or cause a fire. Attempting to open the battery casing will damage the casing and could release toxic and harmful substances, and will render the pack unusable.
- Observe and follow all safety information on the warning label found on the batteries
- Failure to charge the batteries could result in permanent damage to them. Left unplugged, the batteries could fully discharge over time, causing permanent damage.
- Using only charging devices approved by Scooter and never attempt to bypass or override their charging protection circuits.

**If you will not use the product for 30 days, please charge the battery completely.**

**Please fully charge the battery after 90 days. Otherwise the battery could discharge itself and be damaged so it will lose its charging capacity. Please note that this kind of damage is not covered by the warranty.**

- Do not attempt to wash the scooter with a power washer or high pressure hose. Avoid getting water into the charge port. Always close the charge port cover after charging is completed. Make sure that the Charge port is dry before you plug in the power cord, Failure to follow these instructions could expose you to electric shock, injury, burns, or cause a fire.
- Do not submerge the batteries or platform in water, If you suspect the Batteries or powerbase have been submerged or experienced water intrusion, do not attempt to remove the batteries. Do not plug the Power Cord into the scooter. Failure to follow these instructions could expose you to electric shock, injury, burns, or cause are.
- As with all rechargeable batteries , do not charge near flammable material.
- If you use, charge , or store the scooter batteries outside the limits specified, you may void the limited warranty, damage your batteries, and/or experience reduced range and ineffective battery charging.

Note: Lithium-ion batteries are regulated as “Hazardous Materials”. Transporting Lithium battery by air, or other methods, might be prohibited by policies or law . Please contact the designated agents from the carrier company for more details.

## Customer Service / Support

Imported by  
 New Age Group  
 UKBIGBUY.COM  
 B16 OHG, UK  
 Tel : +44 (0)121 454 7589  
 Email : info@ukbigbuy.com



# Warning!



To reduce the risk of injury, the user must read the User Manual in detail, before using this product.

**For re-charging the battery of the product, use only the accompanied UL certified charger provided.**



- Only use the product in accordance with local regulations
- Protective helmet is strongly recommended
- **WARNING!!** Never use the product close to a water source
- **WARNING!!** Stop using this product when damaged
- **WARNING!!** Never use this product out of spaces authorised by local regulations
- The product is designed for 12+ ages, the maximum weight of the user : MAX 100kg
- Improper use can lead to falls or serious injuries. Be sure to read the instruction manual first.
- When you are about to over-speed close to the limit, the product will make a beeping alarm sound.
- When you cross over speed bumps, elevation thresholds, pot-holes, etc, do not pass over at very low speed or very high speed, as it will cause the tire to slip or get stuck.
- Riding while carrying passengers may cause the product to imbalance. You may have an accident.
- Pregnant women are prohibited from riding which may cause serious injury or death.
- Please do not use in rain to avoid any dangerous situation caused by slippery terrain surfaces.



STANDARD - EN 17128 (CLASS 3)

Model: HB4  
 Product Designation: Class 3 PLEV  
 Doc Ref: EN 17128 : 2020  
 Output Voltage: DC 36V  $\approx$  1.5A (max)  
 Charging Voltage: DC 42V  $\approx$  0.85A  
 Battery Capacity: 2.0Ah  
 Battery Type: Rechargeable Lithium-ion Cells  
 Battery Power: 72WH  
 Max Speed: Up to 6mph / 10km/h  
 Weight: 10kg



Made in China



UL2272 CERTIFIED  
 PERSONAL MOBILITY DEVICE



Assembled in China

MANUFACTURER:  
 Haining Qike Intelligent Technology Co. Ltd  
 No.128, SHUANGLIAN ROAD,  
 HAINING CITY, ZHEJIANG, CHINA

**Only use the product in accordance with local regulations**

# WARRANTY

For further warranty information, please visit us at;  
[www.ukbigbuy.com](http://www.ukbigbuy.com)

Tel : +44 (0)121 454 7589  
Email : [info@ukbigbuy.com](mailto:info@ukbigbuy.com)

This product is guaranteed for 12 months from the date of original purchase. If any defect arises due to faulty materials or workmanship, the faulty products must be returned to the place of purchase. Refund or replacement is at the discretion of the retailer.

The following conditions apply:

- Please call +44 (0)121 454 7589 or email to [info@ukbigbuy.com](mailto:info@ukbigbuy.com) before returning to the retailer as we should be able to assist you if the product has become faulty or not.
- The product must be installed and used in accordance with the instructions contained in this instruction guide.
- It must be used only for domestic purposes.
- It does not cover wear and tear, damage, misuse or consumable parts.
- This guarantee is only Valid in the UK and Eire Only.

We hope you enjoy your product for many years to come.



## DISPOSAL OF THE UNIT

The HB4 Smart Balance Board can not be disposed of in domestic rubbish. You are required to dispose of old electrical and electronic appliances like this separately.

Please visit [www.recycle-more.co.uk](http://www.recycle-more.co.uk) or [www.recyclenow.co.uk](http://www.recyclenow.co.uk) for access to information about the recycling of electrical items.

Please visit [www.weeireland.ie](http://www.weeireland.ie) for access to information about the recycling of electrical items purchased in Ireland.

The WEEE directive, introduced in August 2006, states that all electrical items must be recycled, rather than taken to landfill.

Please arrange to take this appliance to your local Civic Amenity site for recycling, once it has reached the end of its life.



# EU Declaration of Conformity (DoC)

**We**

Company name: New Age Clothing Ltd T/A UKBIGBUY.COM  
 Postal address: 1st Floor, 6-8 City Road, Edgbaston  
 Postcode: B16 0HG  
 City: Birmingham  
 Telephone number: 0121 454 7589  
 E-Mail address: info@ukbigbuy.com

**declare that the DoC is issued under our sole responsibility and belongs to the following product:**

Apparatus model/Product: Model HB4 (Smart S) / 6.5" Self Balancing Scooter / Hoverboard  
 Type: 6.5" Self Balancing Scooter / Hoverboard  
 Batch: NAC210412BR  
 Serial number: (0)82210428006674

**Object of the declaration** (identification of apparatus allowing traceability; it may include a colour image of sufficient clarity where necessary for the identification of the apparatus):

Model HB4 (Smart S) / 6.5" Self Balancing Scooter, Hoverboard



**The object of the declaration described above is in conformity with the relevant Union harmonisation legislation:**

RoHS Directive (EU) 2015/863

LVD SHES180901079701HSC	RoHS - NGB18-048743-01 EC NP18-003342 F
...	...
...	...
...	...

**The following harmonised standards and technical specifications have been applied:**

**Title, Date of standard/specification:**

UL2272 - E499404	EMC - EN 61000-6-3:2007 + A1:2011
UL2272 - No. C63856412	EMC - EN 61000-6-1:2007
EN 60335-1:2012 + A11:2014 + A13:2017	MSD - GB/T16483-2008 and ISO11014:2009
EN 60335-1:2012 + A1:2019 + A14:2019 + A2:2019	BS EN 60335-1:2012 + A2:2019
EN 62233:2008	BS EN 62233:2008
(Machine Directive) MD 2006/42/EC Annex I	BS EN 55014-1:2017/A11:2020
EN ISO 12100:2010	BS EN 55014-2:2015
EN 61000-6-3:2001 + A1:2011	BS EN IEC 61000-3-2:2019
EN 61000-6-1:2007	EN 17128 : 2020 - Class 3 PLEV

**Additional information:**

This product is designated under standard EN 17128 Class 3 PLEV (Personal Light Electric Vehicle)

**Signed for and on behalf of:**

Birmingham United Kingdom      12/10/2021      Banti Ram / BDM / *Banti Ram*  
 Place of issue      Date of issue      Name, function, signature



**UKBIGBUY.com**

*Saving you money every day*

If you have any other questions please  
contact us on [info@ukbigbuy.com](mailto:info@ukbigbuy.com)